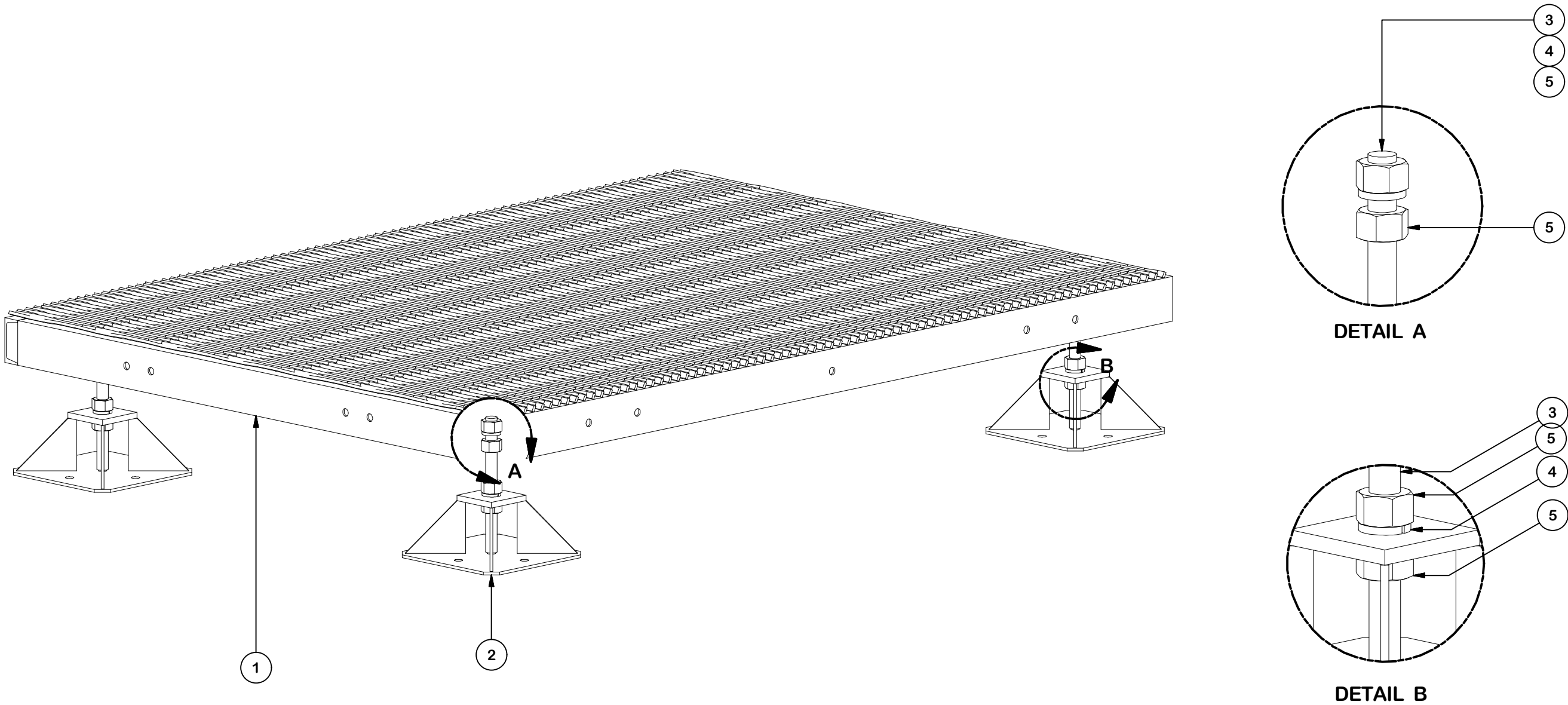


PARTS LIST						
ITEM	QTY	PART NO.	PART DESCRIPTION	LENGTH	UNIT WT.	NET WT.
1	1	X-MEP57	5' X 7' MODULAR EQUIPMENT RACK BASE		397.21	397.21
2	4	X-MPADS	1' SQAURE MODULAR PLATFORM FOOTPAD		17.50	70.01
3	4	G1R-12	1" x 12" THREADED ROD (HDG.)	12 in	2.67	10.69
4	8	G1LW	1" LOCK WASHER		0.09	0.75
5	16	G1NUT	1" HDG HEAVY HEX NUT		0.47	7.52
					TOTAL WT. #	502.85



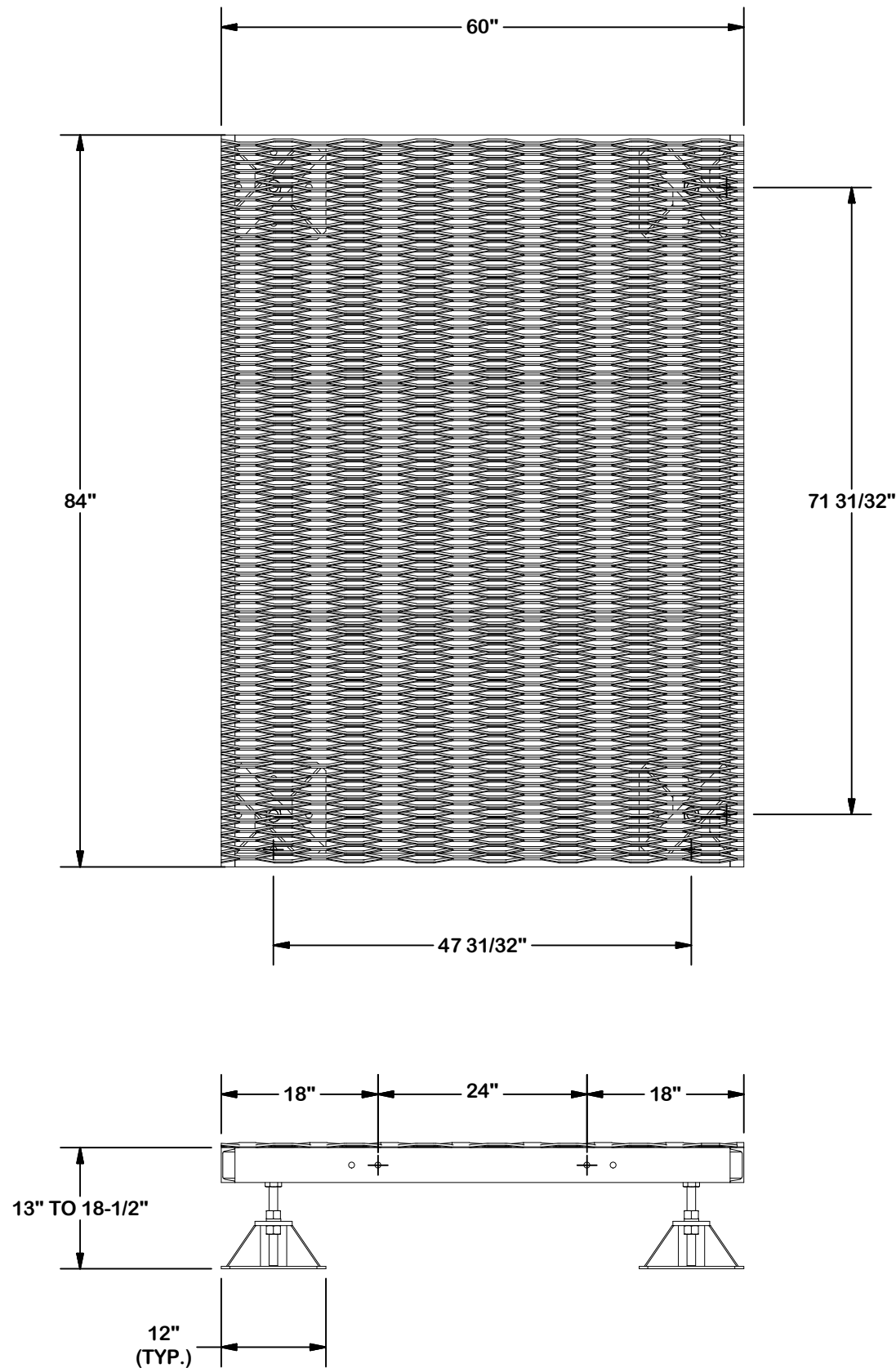
**TOLERANCE NOTES**

TOLERANCES ON DIMENSIONS, UNLESS OTHERWISE NOTED ARE:  
SAWED, SHEARED AND GAS CUT EDGES ( $\pm 0.030''$ )  
DRILLED AND GAS CUT HOLES ( $\pm 0.030''$ ) - NO CONING OF HOLES  
LASER CUT EDGES AND HOLES ( $\pm 0.010''$ ) - NO CONING OF HOLES  
BENDS ARE  $\pm 1/2$  DEGREE  
ALL OTHER MACHINING ( $\pm 0.030''$ )  
ALL OTHER ASSEMBLY ( $\pm 0.060''$ )

PROPRIETARY NOTE:  
THE DATA AND TECHNIQUES CONTAINED IN THIS DRAWING ARE PROPRIETARY INFORMATION OF VALMONT INDUSTRIES AND CONSIDERED A TRADE SECRET. ANY USE OR DISCLOSURE WITHOUT THE CONSENT OF VALMONT INDUSTRIES IS STRICTLY PROHIBITED.

DESCRIPTION			
5' X 7' MODULAR EQUIPMENT PLATFORM WITH SMALL FOOTPADS			
CPD NO.	DRAWN BY	ENG. APPROVAL	
	CSL 3/6/2020	1/19/2021	
CLASS	SUB	DRAWING USAGE	CHECKED BY
87	02	CUSTOMER	BMC 1/19/2021

<b>SITE PRO 1</b> A valmont COMPANY		Locations: New York, NY Atlanta, GA Los Angeles, CA Plymouth, IN Salem, OR Dallas, TX
Engineering Support Team: 1-888-753-7446		
PART NO.	MEP57-7S	
DWG. NO.	MEP57-7S	



### TOLERANCE NOTES

TOLERANCES ON DIMENSIONS, UNLESS OTHERWISE NOTED ARE:  
SAWED, SHEARED AND GAS CUT EDGES ( $\pm 0.030''$ )  
DRILLED AND GAS CUT HOLES ( $\pm 0.030''$ ) - NO CONING OF HOLES  
LASER CUT EDGES AND HOLES ( $\pm 0.010''$ ) - NO CONING OF HOLES  
BENDS ARE  $\pm 1/2$  DEGREE  
ALL OTHER MACHINING ( $\pm 0.030''$ )  
ALL OTHER ASSEMBLY ( $\pm 0.060''$ )

PROPRIETARY NOTE:  
THE DATA AND TECHNIQUES CONTAINED IN THIS DRAWING ARE PROPRIETARY INFORMATION OF VALMONT INDUSTRIES AND CONSIDERED A TRADE SECRET. ANY USE OR DISCLOSURE WITHOUT THE CONSENT OF VALMONT INDUSTRIES IS STRICTLY PROHIBITED.

DESCRIPTION

5' X 7'  
MODULAR EQUIPMENT PLATFORM  
WITH SMALL FOOTPADS

CPD NO.		DRAWN BY	ENG. APPROVAL
		CSL 3/6/2020	1/19/2021
CLASS	SUB	DRAWING USAGE	CHECKED BY
87	02	CUSTOMER	BMC 1/19/2021

SITE  
PRO

1

A valmont COMPANY

Locations:  
New York, NY  
Atlanta, GA  
Los Angeles, CA  
Plymouth, IN  
Salem, OR  
Dallas, TX

Engineering  
Support Team:  
1-888-753-7446

PART NO.	MEP57-7S	PAGE 2 OF 2
DWG. NO.	MEP57-7S	